

Care and Maintenance for Climbing Sutra Ultra Swivel Harnesses and Components

DO NOT alter or modify the harness. All changes or repairs to webbing must be made by Climbing Sutra. Replacement steel parts must be supplied by Climbing Sutra. Recommended shackles that connect to swivel pins are Wichard #1402.

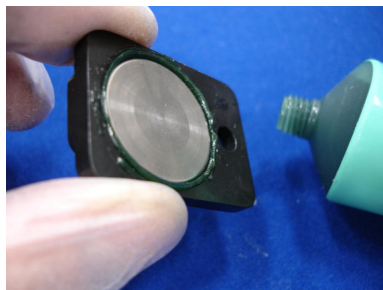
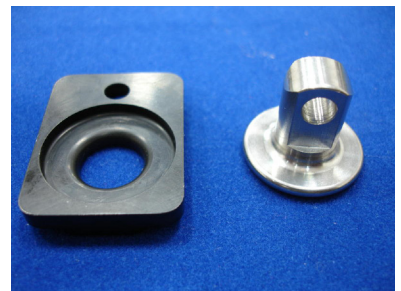
BEFORE EACH USE (Daily Inspection) - Visually inspect webbing and components. Hand check for smooth turning of the swivel pins.

- Visually inspect to see that no webbing is cut or damaged. When more than 10% of the webbing is cut or worn, the harness must be repaired or replaced. *(Photo 1)*
- With two (2) fingers, pull up on each swivel pin and rotate slowly, checking for smooth turning of the pin. If roughness is felt, then disassemble and inspect the parts. (Movement of the swivel pin up/down or in/out of 2mm or less is normal)

EVERY 20 DAYS OF USE - Disassemble, clean, inspect, and lubricate.

- Remove single outside adjustment screw from pin hole plate using 1/8" hex wrench. *(Photo 2)*
- Remove neoprene padding from inside of backing plate. Remove the six or seven screws inside the backing plate. The swivel pin, the pin hole plate, and the top cap will now come apart. *(Photos 3&4)*
- Thoroughly clean the pin and the pin hole plate and inspect for wear. **If the bearing surfaces of either part have become grooved or pitted, they should be replaced.** Initial pin diameter is 12.55mm approximate. If the pin diameter is reduced to 12.35mm or less then the pin and the pin hole plate should be replaced. *(Photo 5)*
- After cleaning and inspection, thoroughly lubricate the pin head and inside of the pin hole plate with automotive wheel bearing grease (NOT Oil). Keep parts and grease clean as contamination will lead to premature wear of the parts. *(Photos 6, 7, 8)*
- Reassemble the parts and tighten screws hand tight. **WARNING! Do not overtighten screws! Minimum torque is 3 Nm (2-1/2 ft lb.) Maximum torque 4 Nm (3 ft lb.) If the hex sockets in the screw heads show any distortion, you are cranking them too tight!** Check for smooth turning of the swivel pin. *(Photos 9, 10)*

EVERY YEAR OF USE - Replace pin hole plates and swivel pins, or sooner, if wear occurs. After two years of use, replace harness or send to Climbing Sutra for recertification.



2941 Brookspark Drive, North Las Vegas, NV 89030
Phone: (702) 255-2222
Fax: (702) 255-0594
todd@climbingsutra.com